
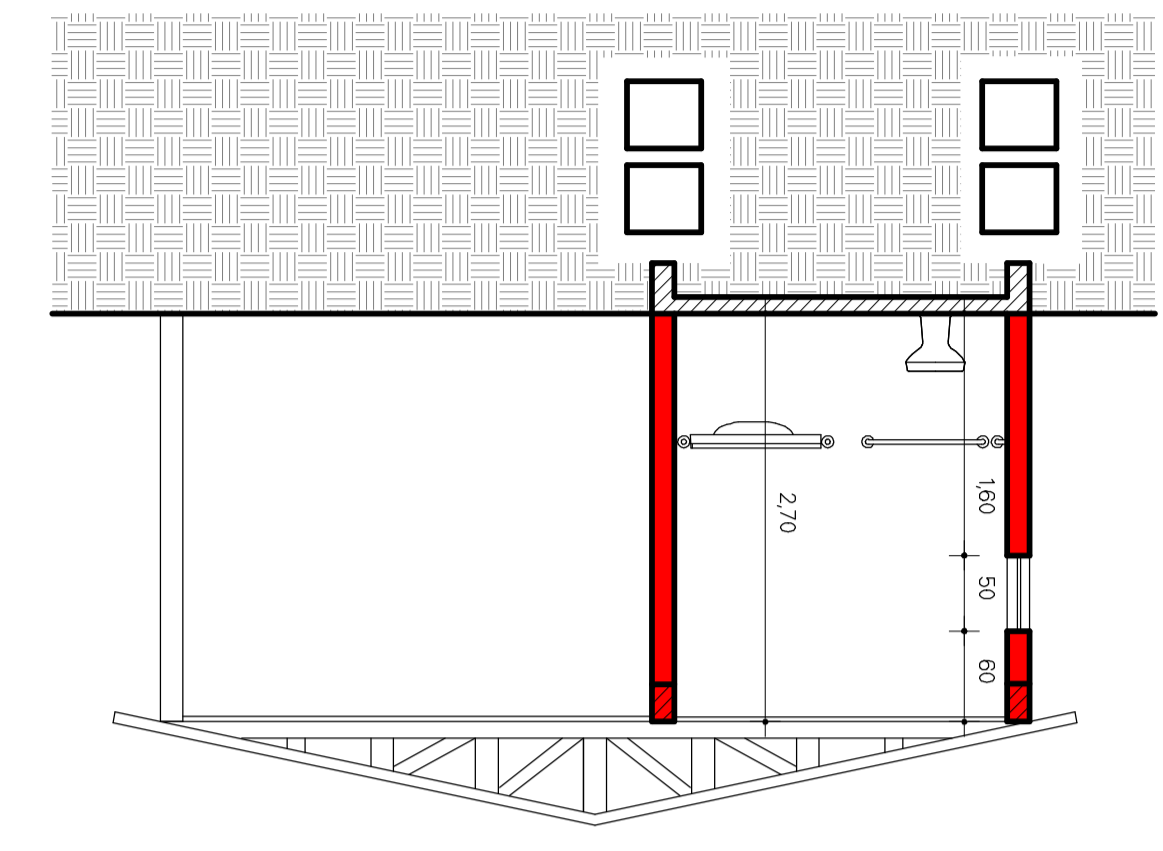


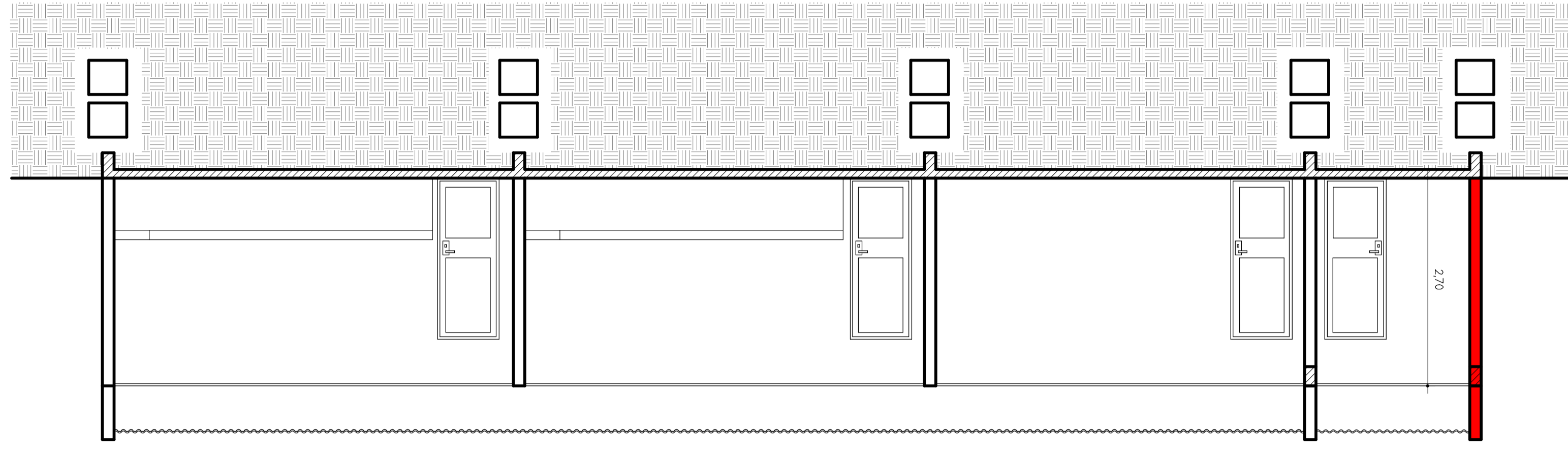
RESPONSÁVEL TÉCNICO:		PRANCHA: 04	
PROJETO:		ÁREA: 103,22 m ²	
DESCRIÇÃO:		DESENHO POPPE	
PROJETO / SERVIÇO:		DATA SET/2014	
MODERNIZAÇÃO DO CENTRO ESPORTIVO DA PRAÇA CÍCERO CAVALHEIRO		ESCALA 1:50	
PROJETO ARQUITETÔNICO DO SANITÁRIO C/ ACESSIBILIDADE			
 PREFEITURA MUNICIPAL SÃO LUIZ GONZAGA - RS			

AMPLIAÇÃO A = 12,37 m²
EXISTENTE A = 90,85 m²
TOTAL A = 103,22 m²

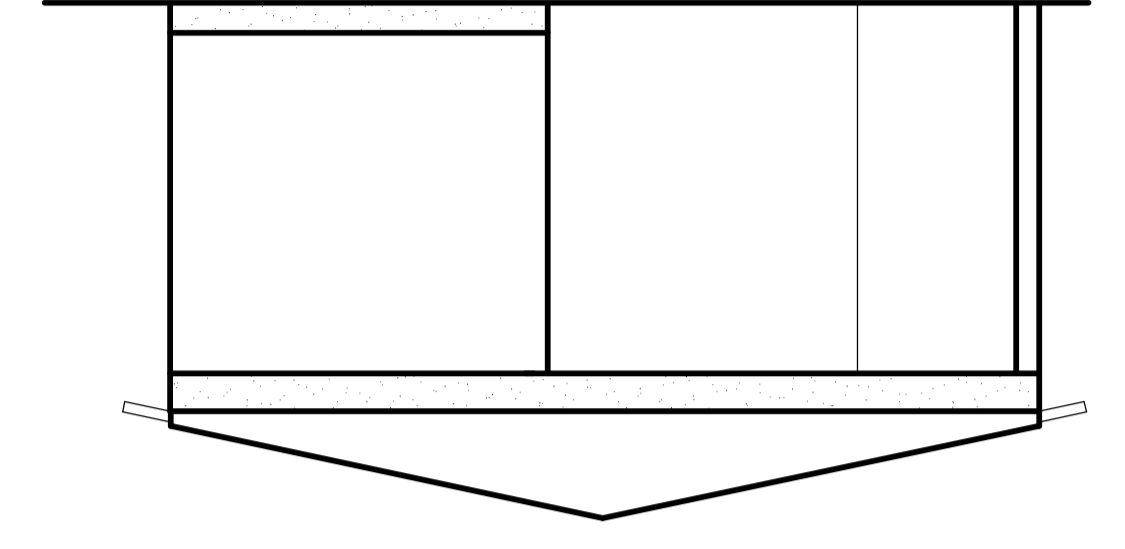
CORTE A - A



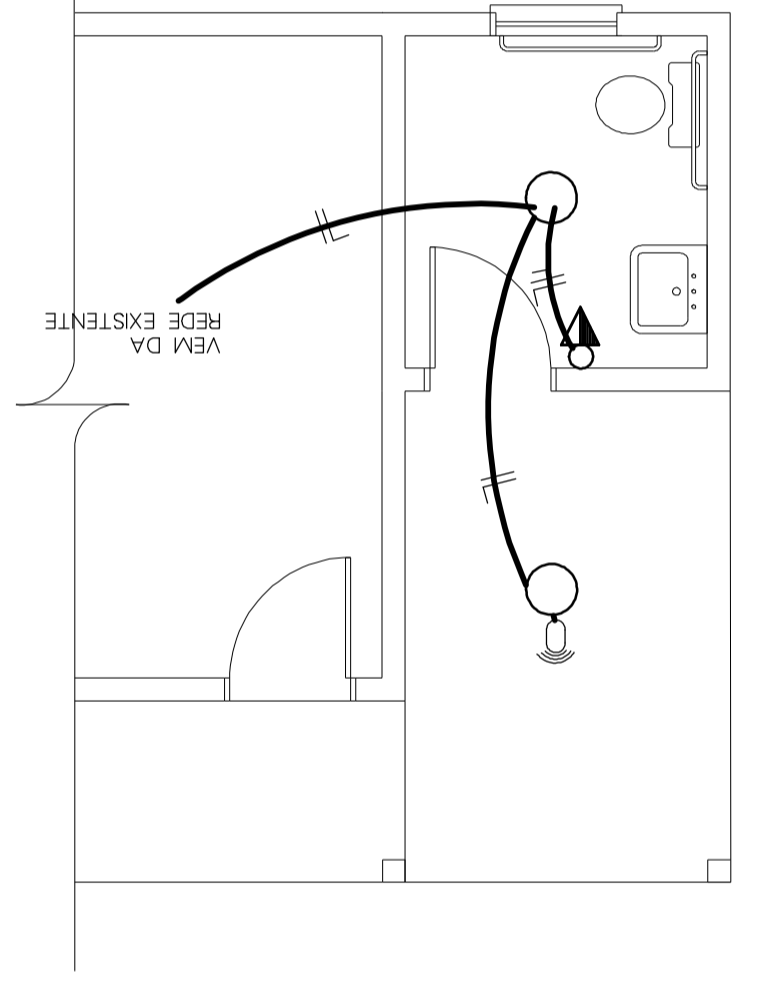
CORTE B - B



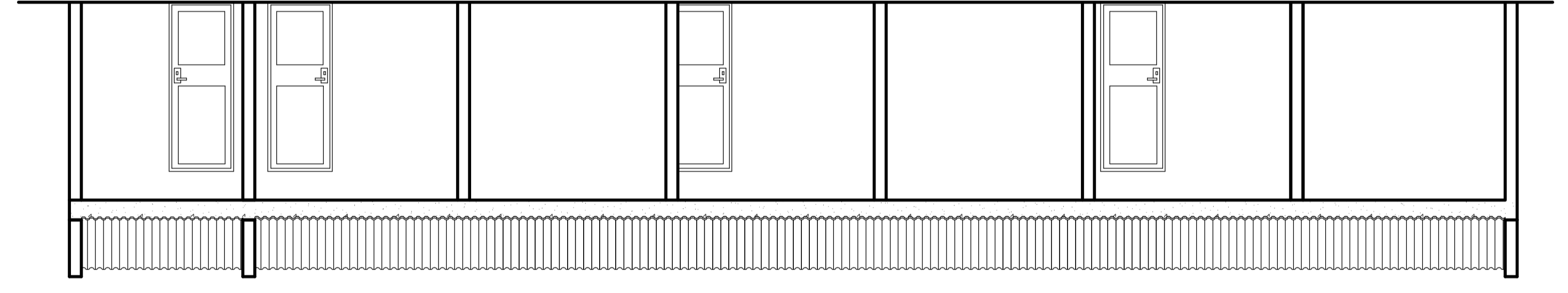
FACHADA LATERAL



ELÉTRICO



FACHADA FRONTAL



PLANTA BAIXA

